

SUBDIVISION PLAN OF LOT B DISTRICT LOT 125 SECTION 28 TOWNSHIP 26  
 ODYD PLAN 19786 EXCEPT PLANS M15094, 37794, KAP67598, KAP67599,  
 KAP67601 AND KAP6740 AND LOT D SECTION 28 TOWNSHIP 26 AND  
 DISTRICT LOT 125 ODYD PLAN 31716

PLAN EPP135966

PRELIMINARY

BCGS B2E.083  
 15 0 15 25 50 100 METRES

THE INTENDED PLOT SIZE OF THIS PLAN IS 864mm IN WIDTH BY 540mm IN HEIGHT (B1 SIZE) WHEN PLOTTED AT A SCALE OF 1:1250

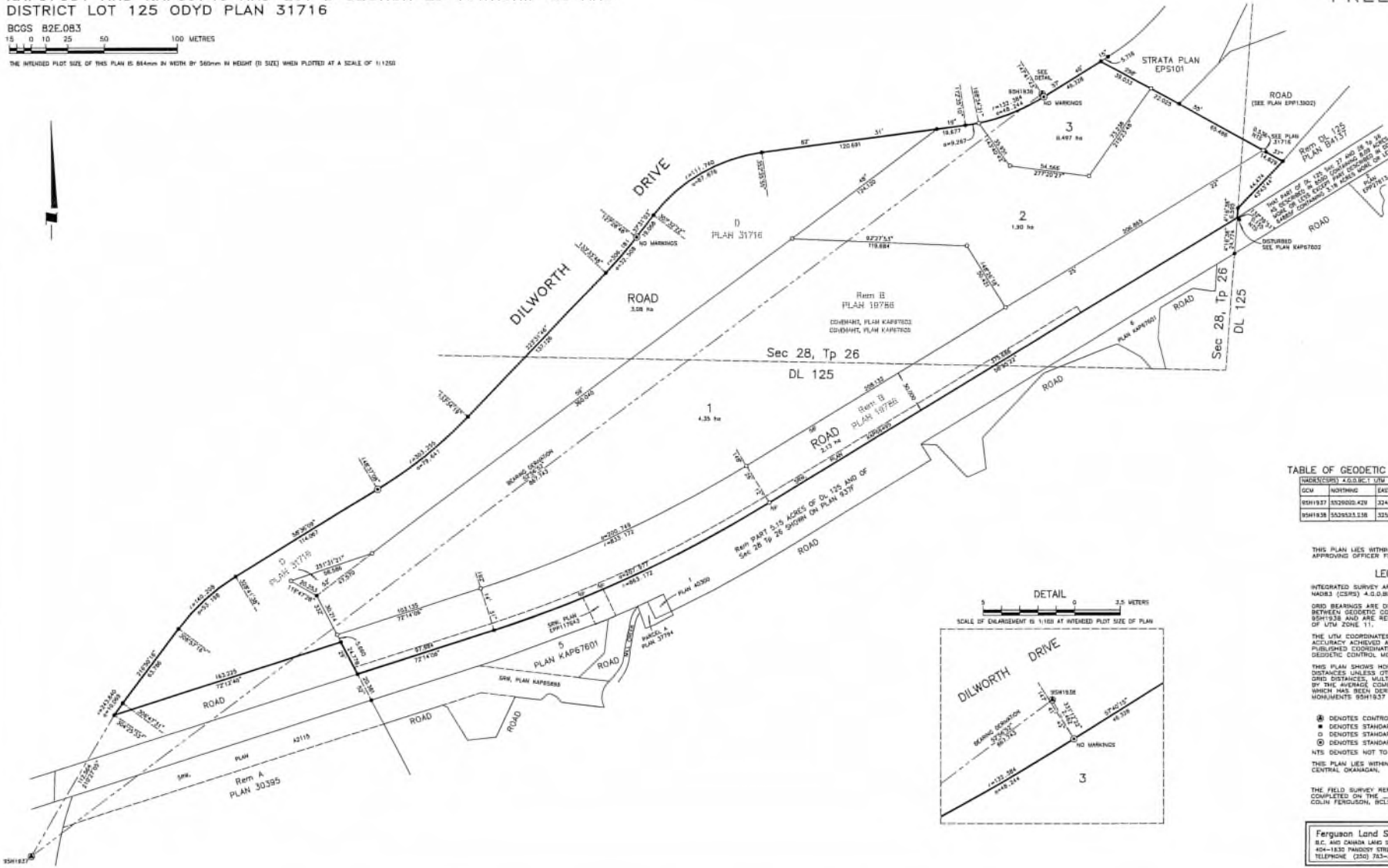


TABLE OF GEODETIC CONTROL MONUMENTS

GRADE(CORN)	4-GS.BC.1	UTM ZONE 11	COORDINATES
OCM	NORTHING	EASTING	ESTIMATED ABSOLUTE ACCURACY
95H1937	5529002.429	324893.729	0.01
95H1938	5529233.238	325586.203	0.01

THIS PLAN LIES WITHIN THE JURISDICTION OF THE APPROVING OFFICER FOR THE CITY OF KELLOWA.

LEGEND

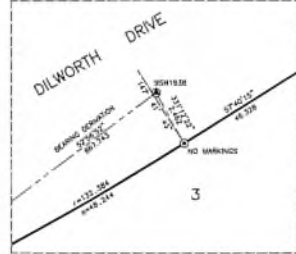
INTEGRATED SURVEY AREA NO. 4, CITY OF KELLOWA, WADE3 (CSRS) 4-5.0.85.1  
 GRID BEARINGS ARE DERIVED FROM OBSERVATIONS BETWEEN GEODETIC CONTROL MONUMENTS 95H1937 AND 95H1938 AND ARE REFERRED TO THE CENTRAL MERIDIAN OF UTM ZONE 11.

THE UTM COORDINATES AND ESTIMATED ABSOLUTE ACCURACY ACHIEVED ARE DERIVED FROM HASCOTT PUBLISHED COORDINATES AND STANDARD DEVIATIONS FOR GEODETIC CONTROL MONUMENTS 95H1937 AND 95H1938. THIS PLAN SHOWS HORIZONTAL GROUND-LEVEL DISTANCES UNLESS OTHERWISE SPECIFIED. TO COMPUTE GRID DISTANCES, MULTIPLY GROUND-LEVEL DISTANCES BY THE AVERAGE CORRECTION FACTOR OF 0.9998745 WHICH HAS BEEN DERIVED FROM GEODETIC CONTROL MONUMENTS 95H1937 AND 95H1938.

- ⊗ DENOTES CONTROL MONUMENT FOUND
  - DENOTES STANDARD IRON POST FOUND
  - DENOTES STANDARD IRON POST FOUND
  - ⊙ DENOTES STANDARD CONCRETE POST FOUND
  - NTS DENOTES NOT TO SCALE
- THIS PLAN LIES WITHIN THE REGIONAL DISTRICT OF CENTRAL OKANAGAN.

THE FIELD SURVEY REPRESENTED BY THIS PLAN WAS COMPLETED ON THE 21<sup>ST</sup> DAY OF FEBRUARY, 2024  
 COLIN FERGUSON, B.S.C. 858

DETAIL  
 SCALE OF ENLARGEMENT IS 1:160 AT INTENDED PLOT SIZE OF PLAN



Ferguson Land Surveying & Geomatics Ltd.  
 S.C. AND DANIEL LAM SURVEYORS  
 804-182 HADDY STREET, KELLOWA, B.C.  
 TELEPHONE (250) 783-3115 FAX (250) 783-0321

JOB No 21865-SUB  
 URL: /url/135966/135966-08286  
 08286 08 24